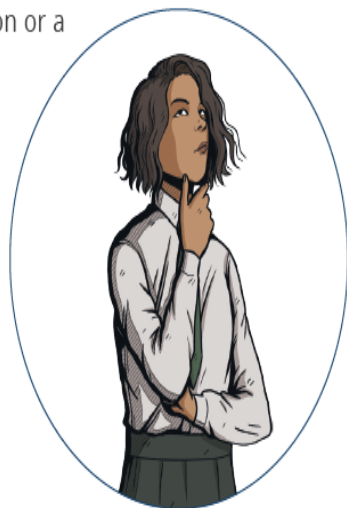


SPaG Starters Apostrophes for Possession

If we are writing about something which belongs to a person or a thing, we add an 's to the end of the person or thing. The exceptions to this are:



- if the person or thing already ends in an s and is a plural (more than one), we put the apostrophe **after** the s, and don't add another one;
- the word **it's** only has an apostrophe to show contraction from **it is**. If something belongs to **it**, we write **its**.

Rewrite the sentences, correcting any mistakes.

1. Jude's bag got wet in the rain on his way home from school. Its now completely drenched.

2. The students performance had to be stopped because of an electrical problem; its unlikely she will be able to continue.

3. The teams performance was astounding. The team captains speech at half time had really motivated everyone.

Mental maths and fluency

Section 2

Write this number in words:

6041

Section 5

Add these numbers together.

$$\begin{array}{r} 7 \quad 1 \quad 9 \\ + \quad 2 \quad 1 \quad 1 \\ \hline \end{array}$$

Section 6

Make £6.23 with the least amount of coins possible.

SPaG

Mr Whoops has made **two** clumsy spelling mistakes in his sentence. Can you underline them and correct them? Use a dictionary if you need to.

Yesterday, I went on an exciting advnshure into the mysterious forest.

While trekking through the undergrowth, I spotted a rare creature as it disappeared into its hole.



Pick a challenge to complete this week.

Geography

Edible plate tectonics!

Earthquakes happen most commonly at plate boundaries. With three sandwich biscuits, gently remove the top biscuit, snap it in half and place back on top of the filling. Can you create the types of plate boundaries (constructive, destructive, and conservative) by moving the top biscuits in a similar way to the tectonic plates? What do you notice about how easy it is to move the biscuit 'plates' over the filling (mantle)?

DT

Textile Hunt

We would like you to investigate and explore your home, making a list of as many different materials and textiles as you can.

Science

<https://www.bbc.co.uk/bitesize/topics/z6wwxnb/articles/zp4w8hv#z4qgg7h>

Using this link we would like you to explore how your local environment is changing.

French

Imagine you are spending your summer holidays in France.

You are in a caf .

What will you order?

Create a list in French.

RE

Could you find a traditional Jewish recipe for Challah bread?

Challah

Challah bread is made before Shabbat so that it is ready to be eaten on the day. These loaves are round but they would often be plaited in an oval shape. They can have sweet or savoury flavours added to the dough, or they can be left plain.

PE

Research a famous cricketer, why are they famous? Do they have any special skills? How did they become a cricket player?



Year 4's
Home Learning

Homework due back on
06.0.26